

2025

ROMSEY SIGNAL BOX

If you have never been inside a railway signal box, this is one you must visit!

Suitable for all ages

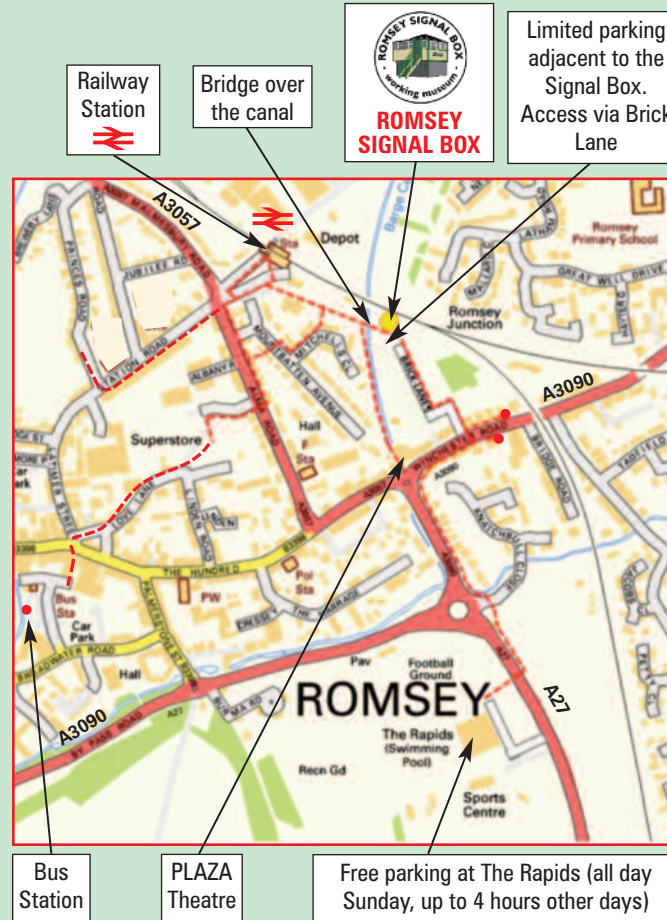


NEW DISCOVERY CENTRE



ROMSEY SIGNAL BOX

How to get here



Limited parking adjacent to the Signal Box. Access via Brick Lane

Railway Station

Bridge over the canal

Bus Station

PLAZA Theatre

Free parking at The Rapids (all day Sunday, up to 4 hours other days)

OPENING DATES IN 2025

We recommend allowing between one and two hours for your visit.

The museum will be open on the following dates

First Sunday each month from February:

2 Feb, 2 Mar, 6 Apr, 4 May, 1 June, 6 July, 3 Aug, 7 Sep, 5 Oct, 2 Nov, 7 Dec.

Third Saturday each month until November:

18 Jan, 15 Feb, 15 Mar, 19 Apr, 17 May, 21 June, 19 July, 16 Aug, * 20 Sep, 18 Oct, 15 Nov.

The following Thursdays during school holidays:

24 July, 31 July, 7 Aug, 14 Aug, 21 Aug, 28 Aug.

Additional special event days:

Sat 1 Mar, * Sun 21 Sep.

The signal box will be open for regular demonstrations.

Any extra dates, and opportunities to observe the signal box in full operation, or to attend signalling training days, will be advertised on the website.

GROUP VISITS welcome at other times by appointment.

OPENING TIMES

Gates open at 11:00, last entry 15:45

PRICES

Adults (16 and over):*
£5.00 (with Gift Aid), £4.00 (no Gift Aid).

*Free entry on 20 and 21 Sep for Heritage Open Days

Children under 16: Free (must be accompanied by Adult)

Free entry to members of the Friends of Romsey Signal Box (annual subscription £10)

Credit and debit cards or cash accepted. No cheques

ENQUIRIES

See www.romseysignalbox.org.uk

Email: info@romseysignalbox.org.uk

Phone: 01794 500523 or 07743 942576



By car: Drive into Brick Lane. Limited parking available by the signal box. Visitors with disabilities or very limited mobility may wish to reserve parking in advance by phone or email. Alternative parking is available at The Rapids and in the town.

By train: The signal box is just 5 minutes walk from Romsey railway station (regular services from Southampton, Eastleigh, Portsmouth and Salisbury, and connections from London and Bournemouth). Check for engineering works in the area.

By bus: Buses from Southampton, Winchester and Eastleigh stop in Winchester Road (bus stops shown as •). The signal box is 15 minutes walk from the bus station.

Red dashes show pedestrian routes to the signal box



ROMSEY SIGNAL BOX
BRICK LANE,
ROMSEY,
HAMPSHIRE,
SO51 8LG





ROMSEY SIGNAL BOX

The fully restored signal box is opened to the public by volunteers on a regular basis. Visitors are encouraged to pull the levers and operate all the associated equipment. The site includes other displays and attractions and a small café.



Romsey Signal Box is now part of a working museum in the Hampshire market town of Romsey. Originally opened in 1865 at the junction of lines from Romsey to Eastleigh and Redbridge, the box was closed in 1982.

Fortunately the Romsey & District Buildings Preservation Trust rescued the signal box, which was moved down from its original site to its own dedicated plot of land immediately below, which the Trust had purchased, arriving there in 1987.



Since 1987 the Friends of Romsey Signal Box have restored the inside of the box to operational order, with various signals and a point connected to some of the levers. Your guide will explain what everything does, and give a simple demonstration of the signal box in operation, inviting you to pull the levers which operate the signals outside.



A simulator downstairs enables visitors to be given demonstrations of the signal box in operation. It also enables enthusiasts and professional signalmen to operate the signal box to a full timetable as if for real, without the risk of crashing any real trains. The interlocking under the signal box is clearly visible thanks to the installation of a transparent cover.



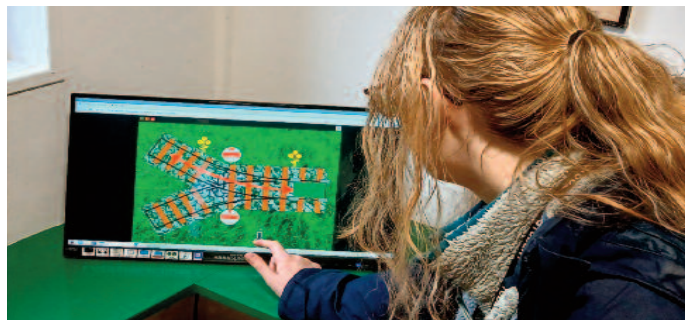
Elsewhere on the site there is a miniature lever frame with full size instruments which is based on the signal box at Cowley Bridge Junction, just outside Exeter. On Open Days this can be seen being operated by volunteer signalmen to a timetable.

Other working exhibits include a small ground frame connected to two signals. Visitors of all ages are encouraged to pull these levers and those in the main signal box, and see the results of their efforts!



Children can enjoy watching James the Red Engine and his train.

Our Discovery Centre includes interactive touch screens, trains running on an automated signalling display, videos, and assorted hands-on exhibits. Suitable for all ages to enjoy.



KEY FEATURES

- Original railway signal box from 1865, restored to full working order
- Demonstrations of the signal box in operation
- Visitors can pull levers, operate signals, and ring the bells
- Flexible visits, including self-guided tours
- Discovery centre with displays, interactive items and railway artifacts
- Miniature signal box in operation to a timetable
- Outdoor landscaped site with railway track, signals and other railway items to operate and view
- Garden railway for children to watch
- Toy trains for young children to play with

FACILITIES ON SITE

- Dogs welcome (except in cafe).
- Light refreshments available in the Buffer Stop Café
- Picnic tables in attractive landscaped surroundings (you are welcome to bring your own food and drinks)
- Small souvenir and book shop
- Facilities for disabled visitors include wheelchair access around much of the site, and into the indoor visitor facilities, with live CCTV of activity in the signal box. (Access to the operating floor of the signal box is by a steep open stairway)
- Accessible toilet available for all visitors



Visitors can follow a trail guide which explains the range of historic items and equipment spread around the site. The Buffer Stop Café serves drinks, cakes and a varied range of other snack items. The whole site has been landscaped and provides for a relaxing visit which can easily last an hour or more.